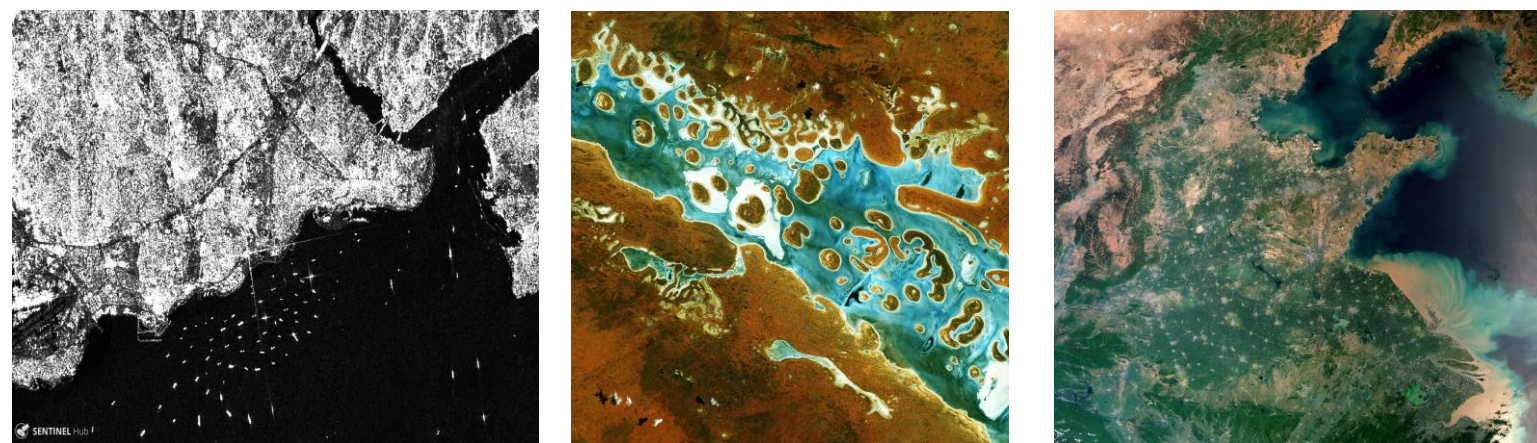


# DATA CUBE SERVICE FOR COPERNICUS

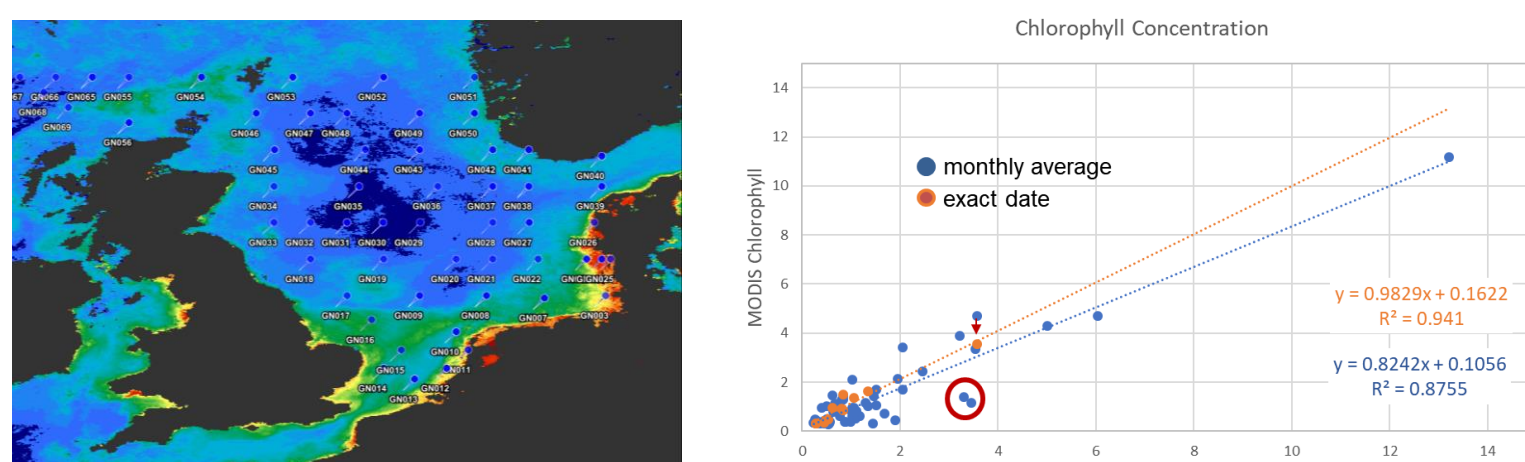
A novel EO data interaction capability

Ease the integration, preparation and processing of various data sources for coastal downstream applications

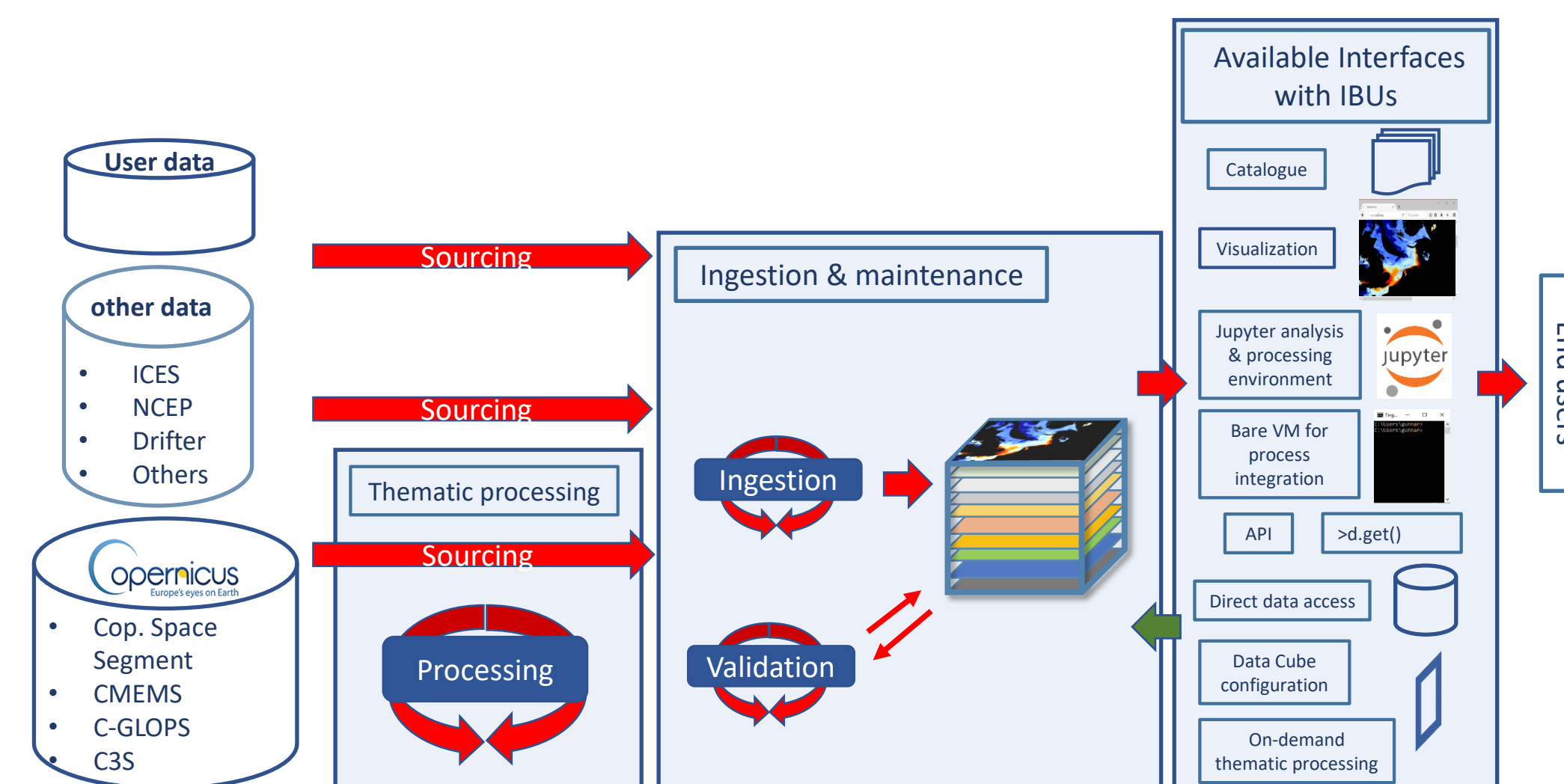
- Sentinel 1, 2 and 3 products from ESA and Eumetsat
- Landsat-8, Proba-V and other satellite data



- Water quality processing of **high resolution, medium resolution** and **geostationary data** from **HIGHROC** processing chain
- **Validated** HIGHROC data and validation tools
- User provided, **individually configured processing chains**



- Copernicus Marine, Land and Climate Service data
- In-situ data from open service (ICES, NCEP, ...)
- User's local storage

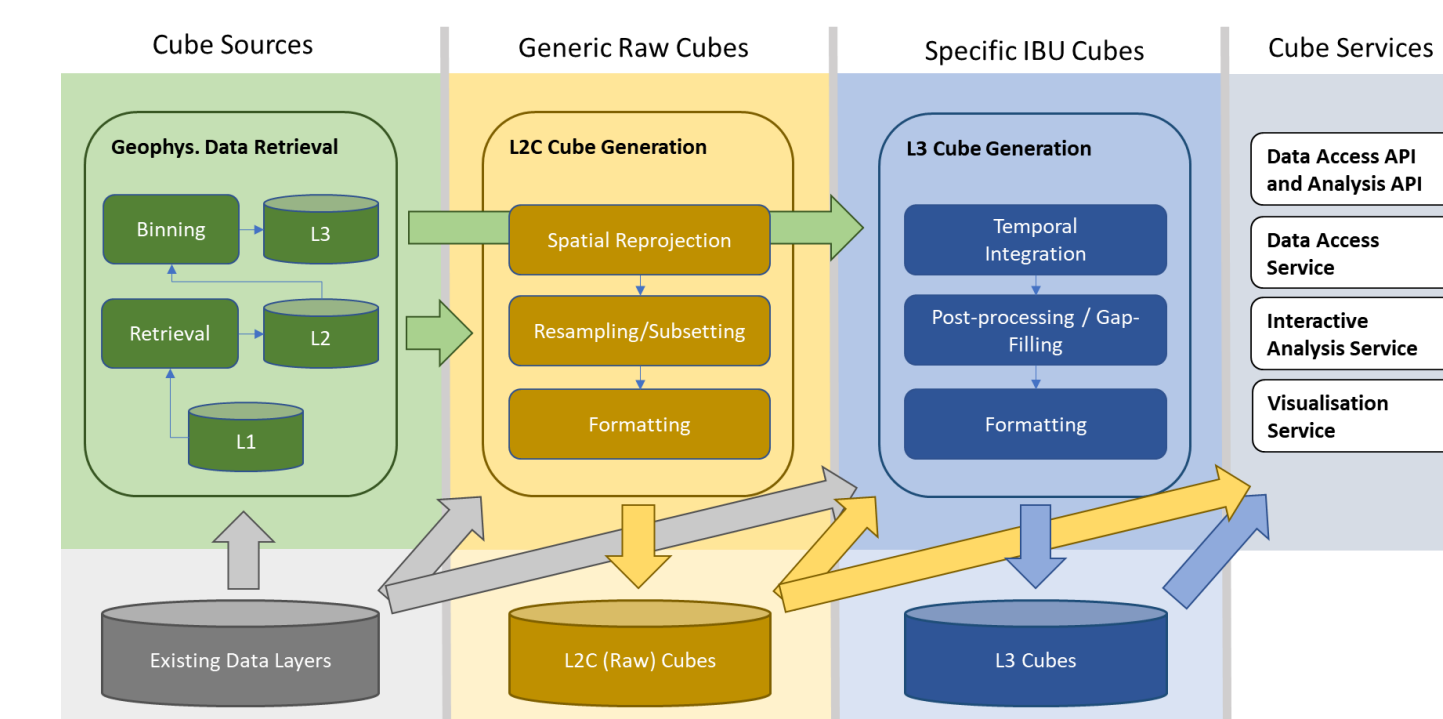


- E≡DataBee is our **datacube software**
- Provided with **accompanying services** by water colour and ICT experts **for institutional, research and commercial users (IBU)**
- Deployable on **DIAS, AWS, Calvalus and private clouds.**

## Technology Stack

Object Storage (OBS) for cloud storage and fast access  
Zarr as cloud storage format  
Tailor CF conventions to match needs of ARD applied to data cubes  
Python **xarray** package as reference API for data analysis & processing

## Cube Processing Model



## Service Offer

### Consultancy

#### Software Components

- Source data access
- Preprocessing
- Thematic processing, specifically Highroc
- Data Cube core software and API
- Validation tools
- Visualisation

#### Configuration

- Selection and adaption of software components
- Connecting to selected data sources
- Integration of user supplied processing components

#### Deployment on selected hardware platform

- Software as a Service (SaaS)
- Processing as a Service (PaaS)

#### Technical support & training