

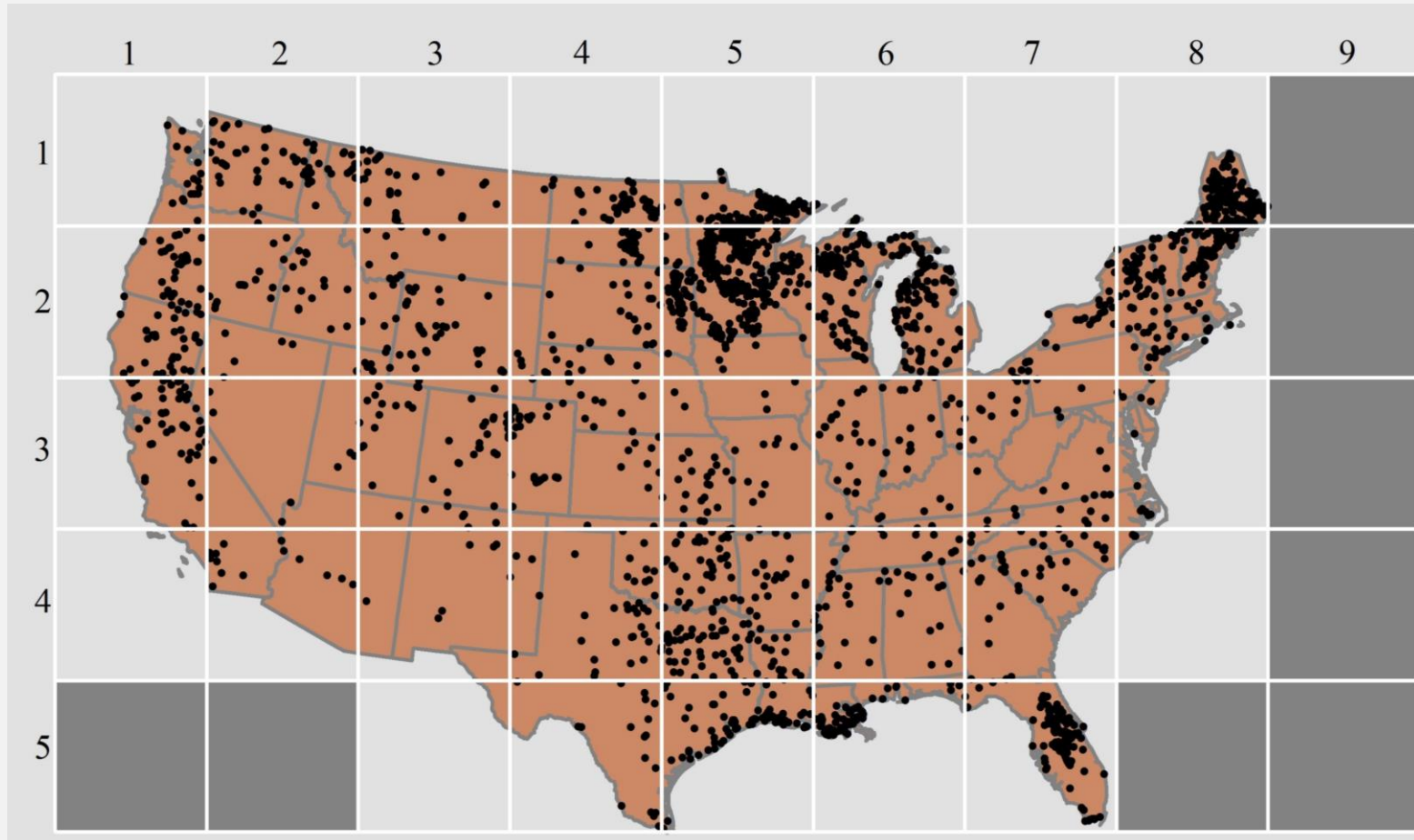
Cyanobacteria Assessment Network

CyAN Science Team

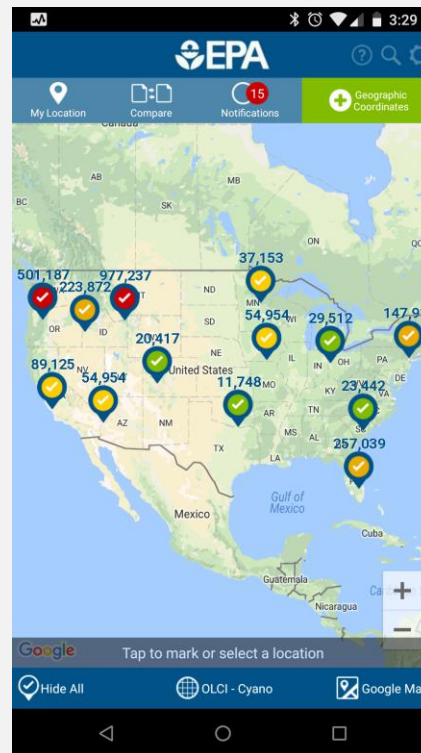


August 30, 2018

Weekly provisional monitoring

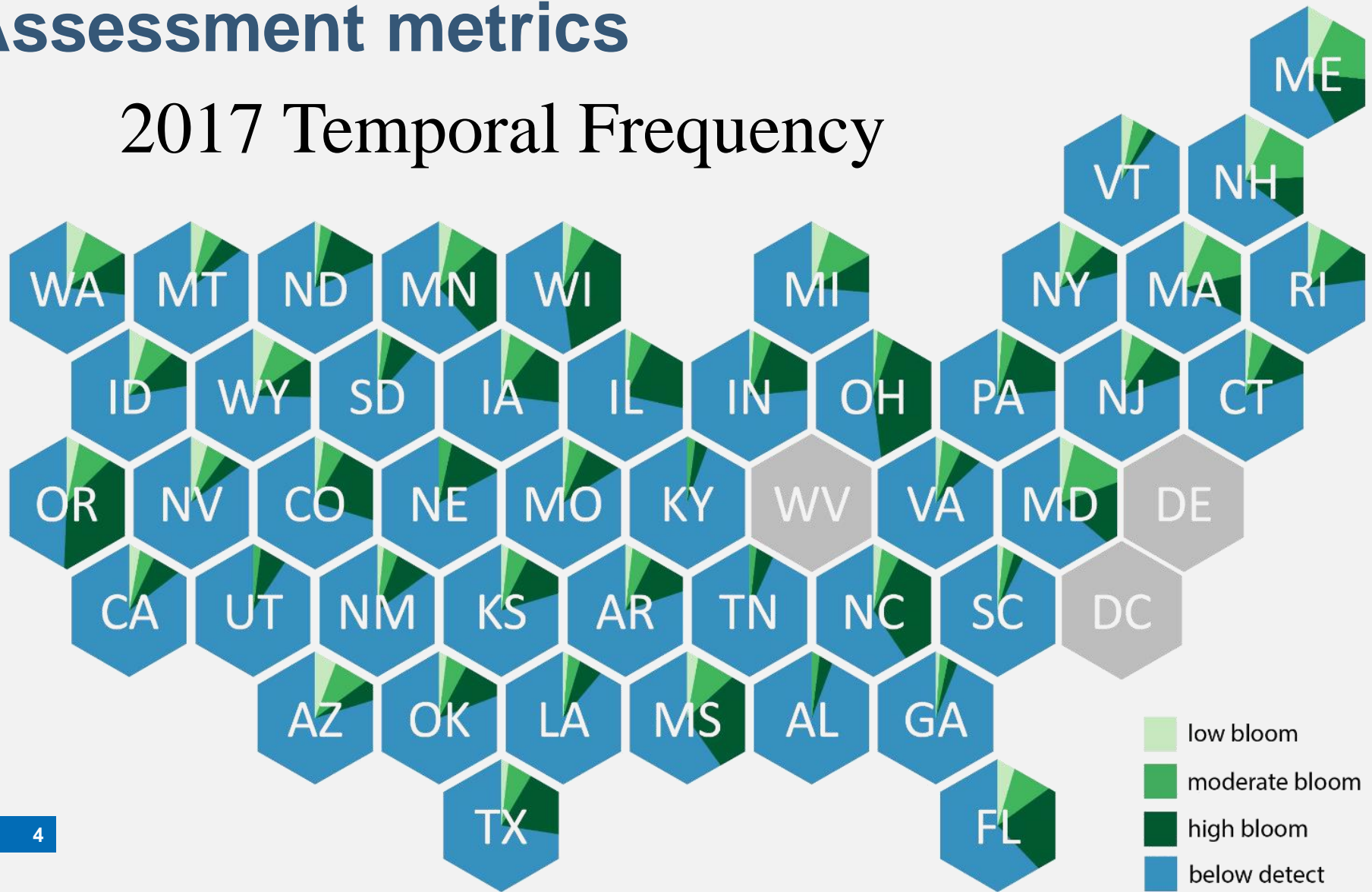


The screenshot shows the ArcMap application window. The title bar reads "Untitled - ArcMap". The menu bar includes File, Edit, View, Bookmarks, Insert, Selection, Geoprocessing, Customize, Windows, and Help. The toolbar contains various icons for map navigation and editing. The Table of Contents pane on the left shows a single layer named "Layers" with a path: \\Aa.ad.epa.gov\\ord\\RTP\\USERS\\A-D\\envisat.2009005.01051518CL3.EF3. The ArcToolbox pane is open, showing the "RS Tools" category with options like "Create time series composites", "Mask no data values", "Pixel extract by points", "Pixel extract by polygons", and "Raster statistics by polygons". The main map area displays a satellite image of a coastal region with a yellow overlay. The status bar at the bottom indicates the coordinates 728829.982 and 3059029.083 Meters.



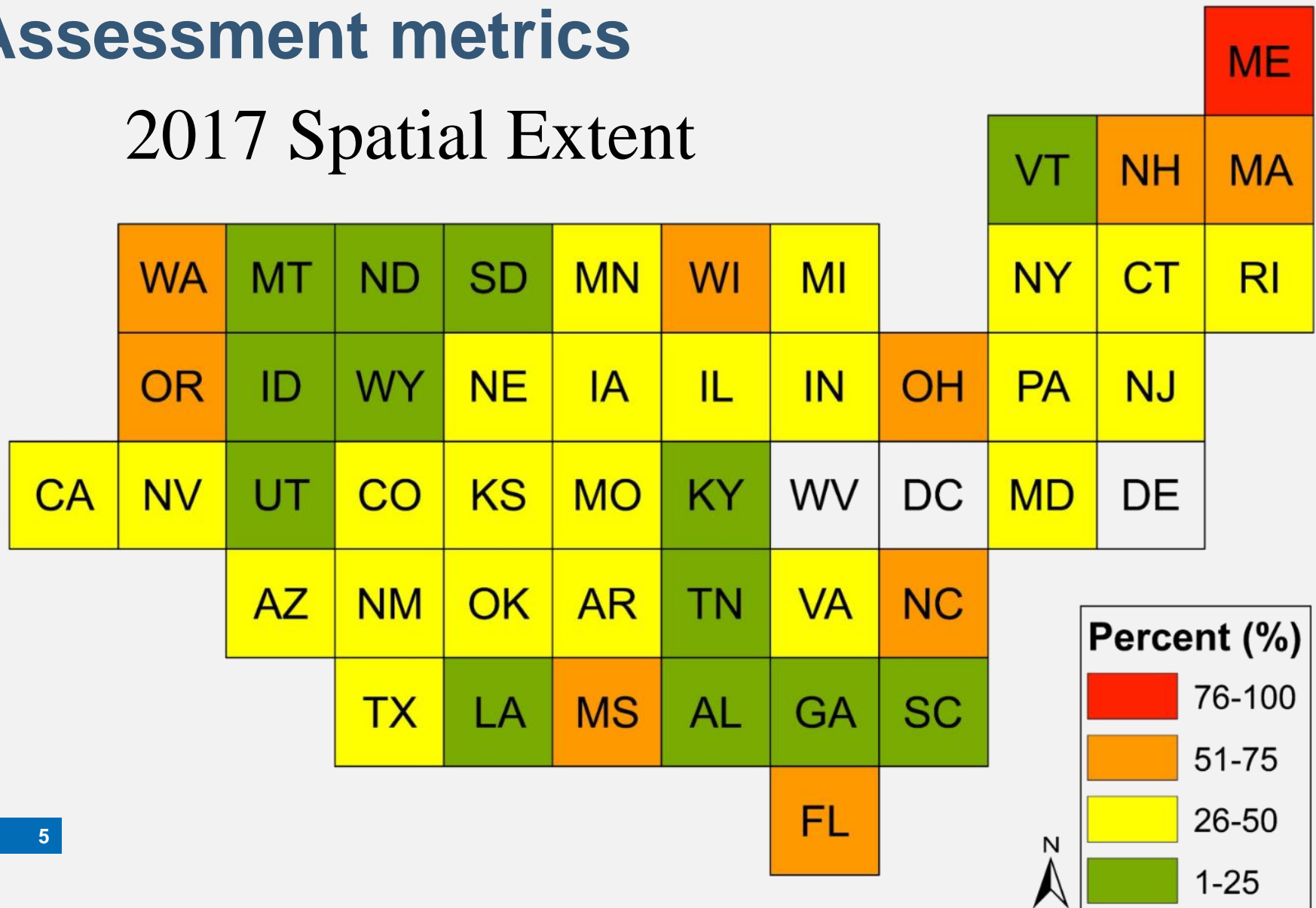
Assessment metrics

2017 Temporal Frequency



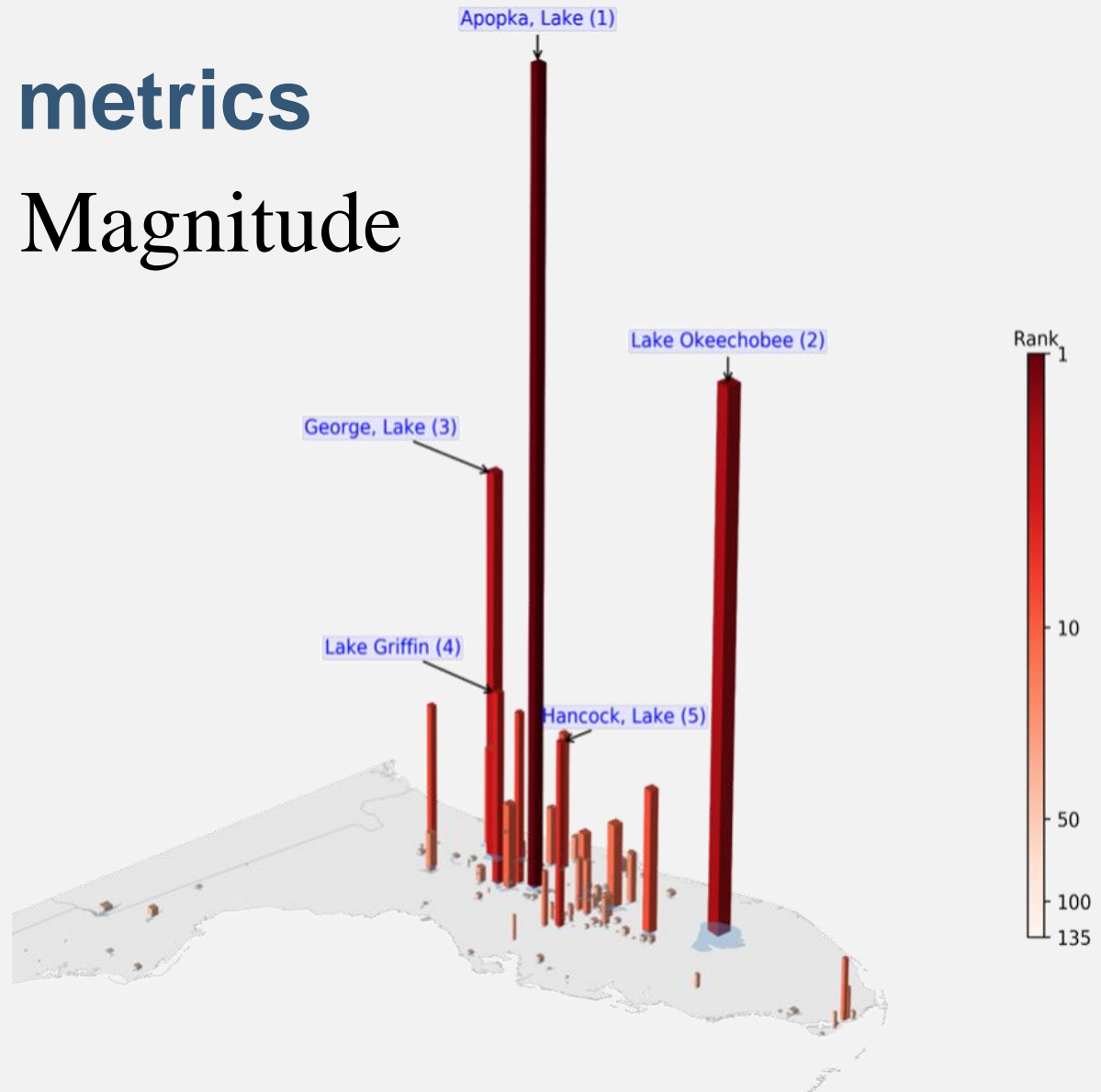
Assessment metrics

2017 Spatial Extent

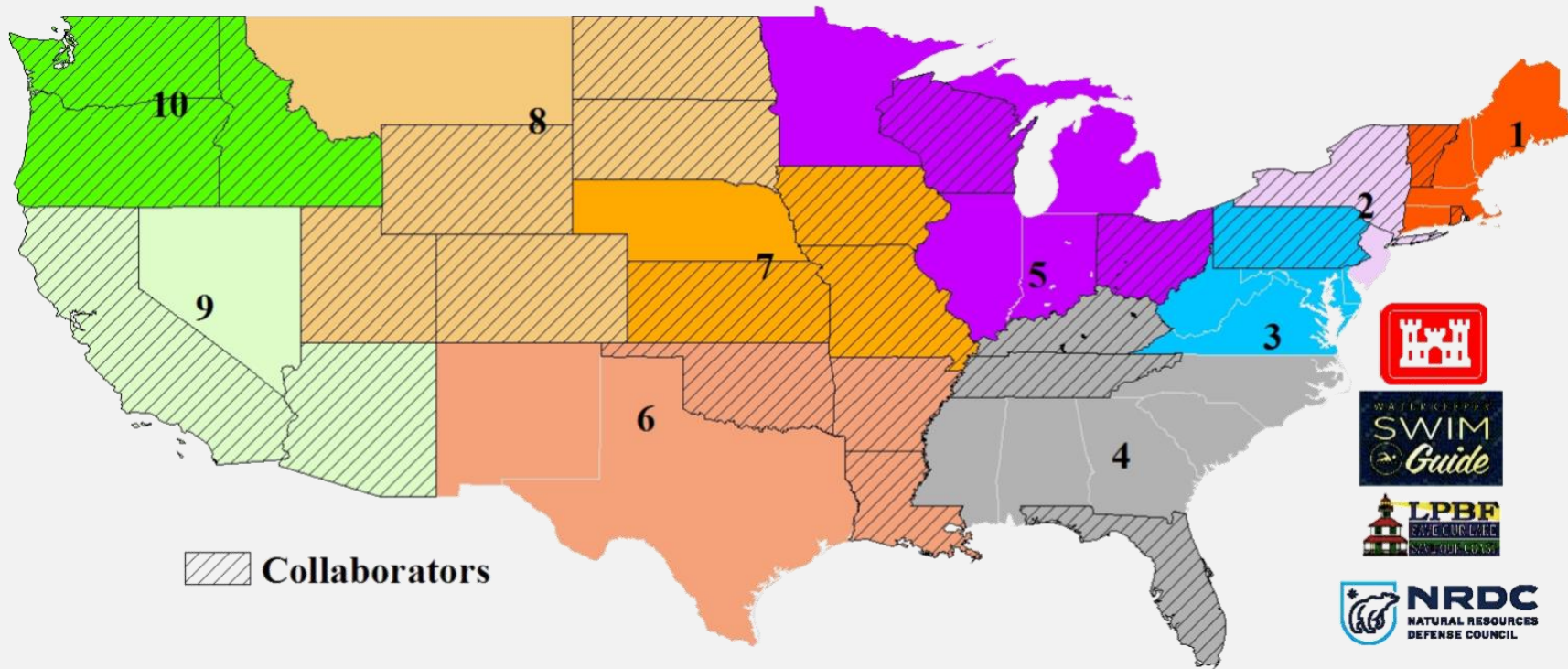


Assessment metrics

Biomass Magnitude



CYAN CYANOBACTERIA ASSESSMENT NETWORK



www.epa.gov/cyanoproject